

In addition to NCIS What's Happening, we are providing:

1. a weekly update of USDA's drought monitor for both corn and soybeans and
2. daily futures price movements for both corn and soybeans including crop revenue guarantee prices along with the PLC price.

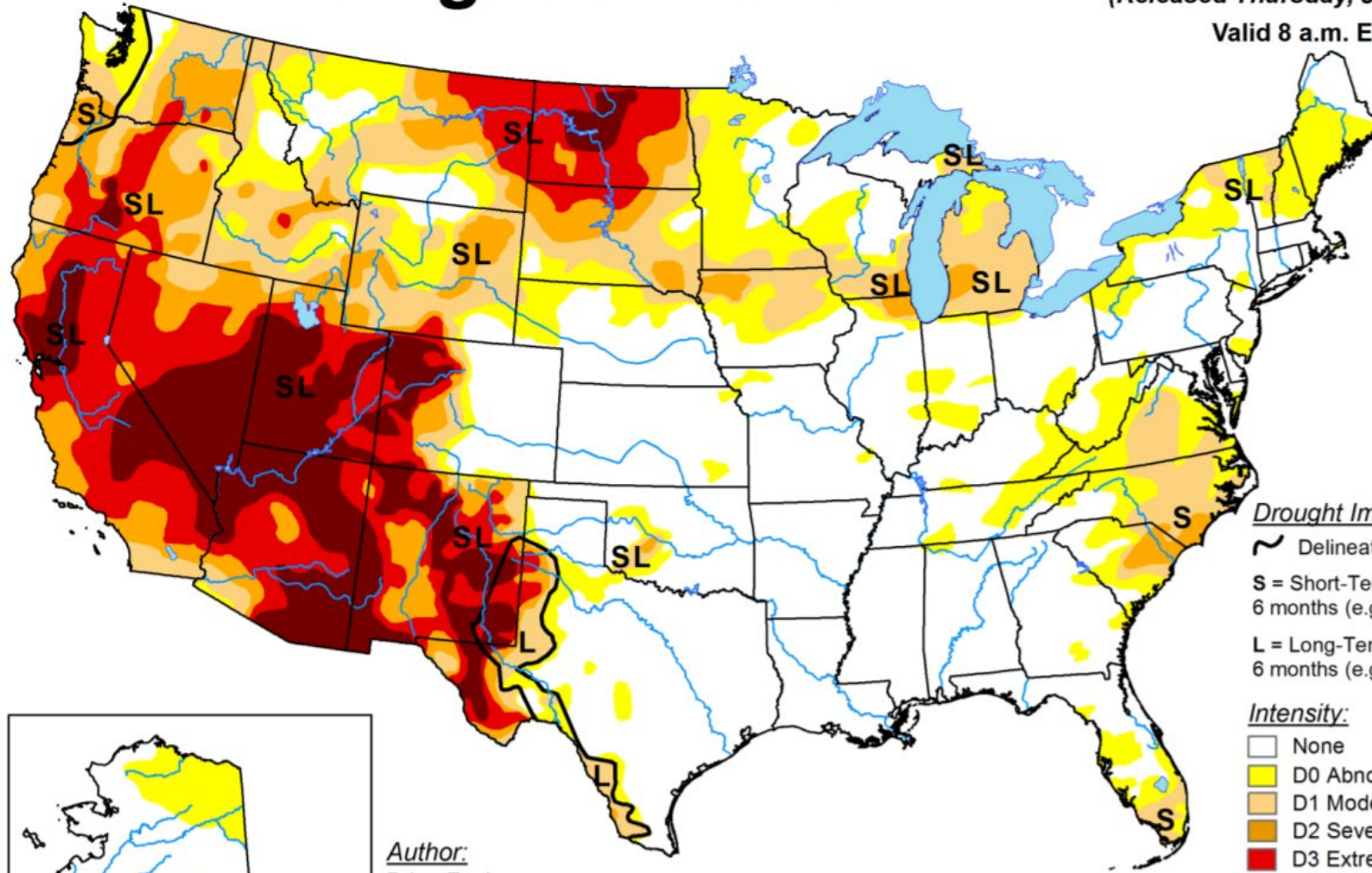
We hope you will find this a useful supplement to our weekly NCIS update.

# U.S. Drought Monitor

June 1, 2021

(Released Thursday, Jun. 3, 2021)

Valid 8 a.m. EDT



### Drought Impact Types:

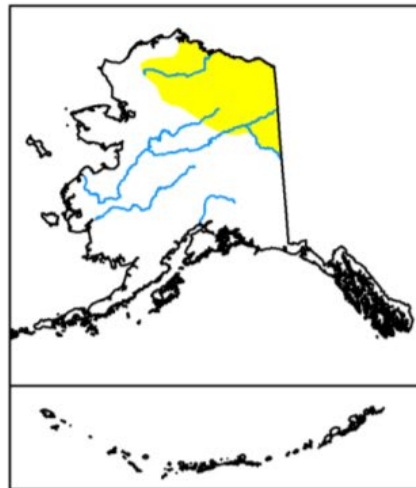
~ Delineates dominant impacts

S = Short-Term, typically less than 6 months (e.g. agriculture, grasslands)

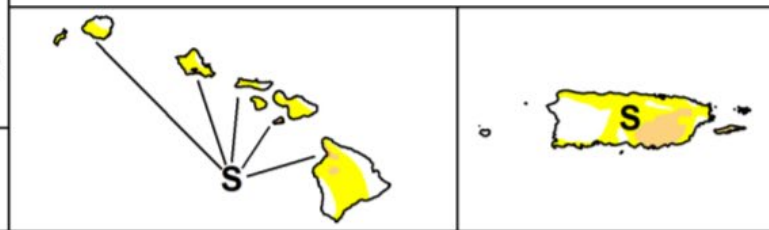
L = Long-Term, typically greater than 6 months (e.g. hydrology, ecology)

### Intensity:

- None
- D0 Abnormally Dry
- D1 Moderate Drought
- D2 Severe Drought
- D3 Extreme Drought
- D4 Exceptional Drought



Author:  
Brian Fuchs  
National Drought Mitigation Center



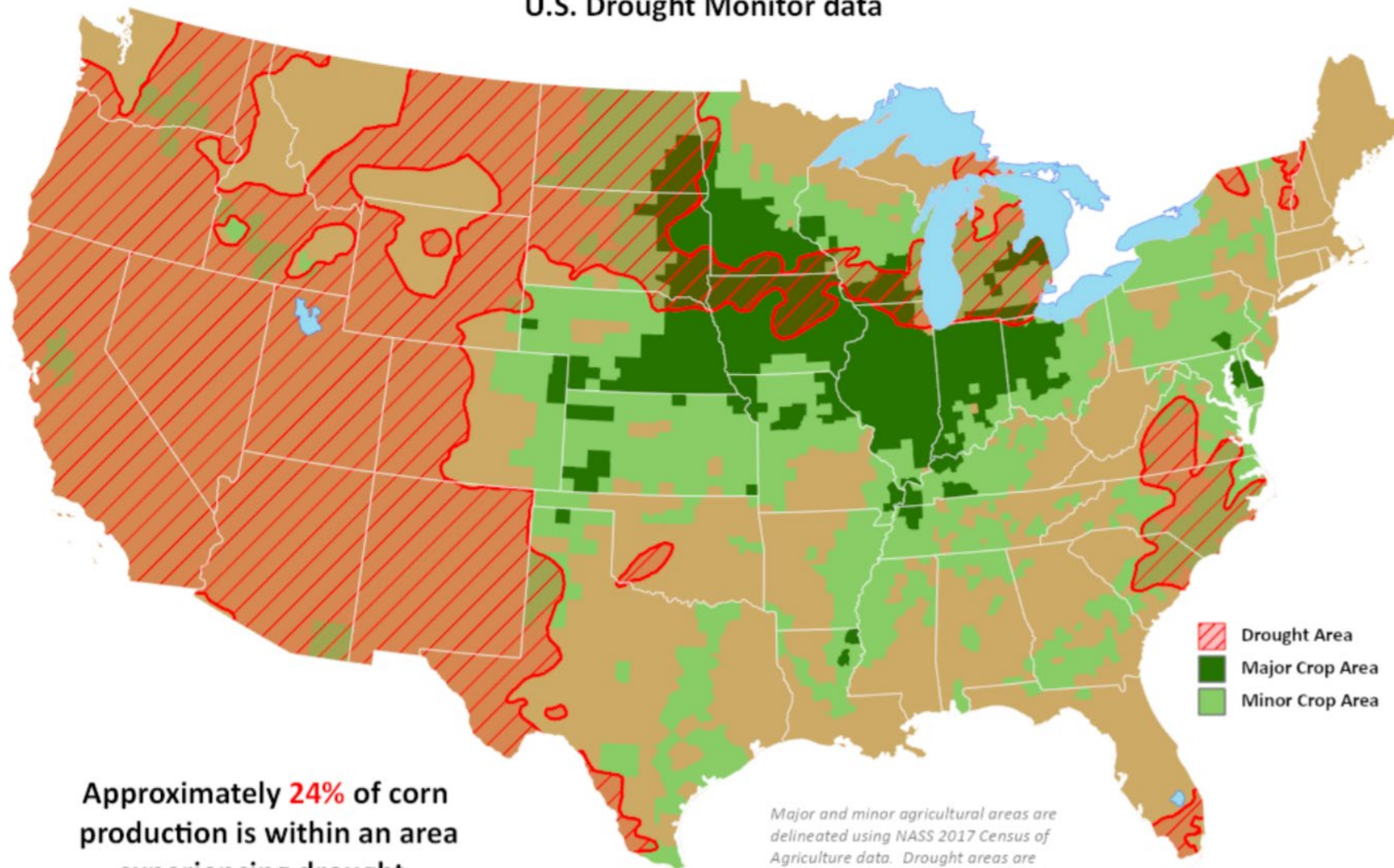
The Drought Monitor focuses on broad-scale conditions. Local conditions may vary. For more information on the Drought Monitor, go to <https://droughtmonitor.unl.edu/About.aspx>



[droughtmonitor.unl.edu](https://droughtmonitor.unl.edu)

# Corn Areas in Drought

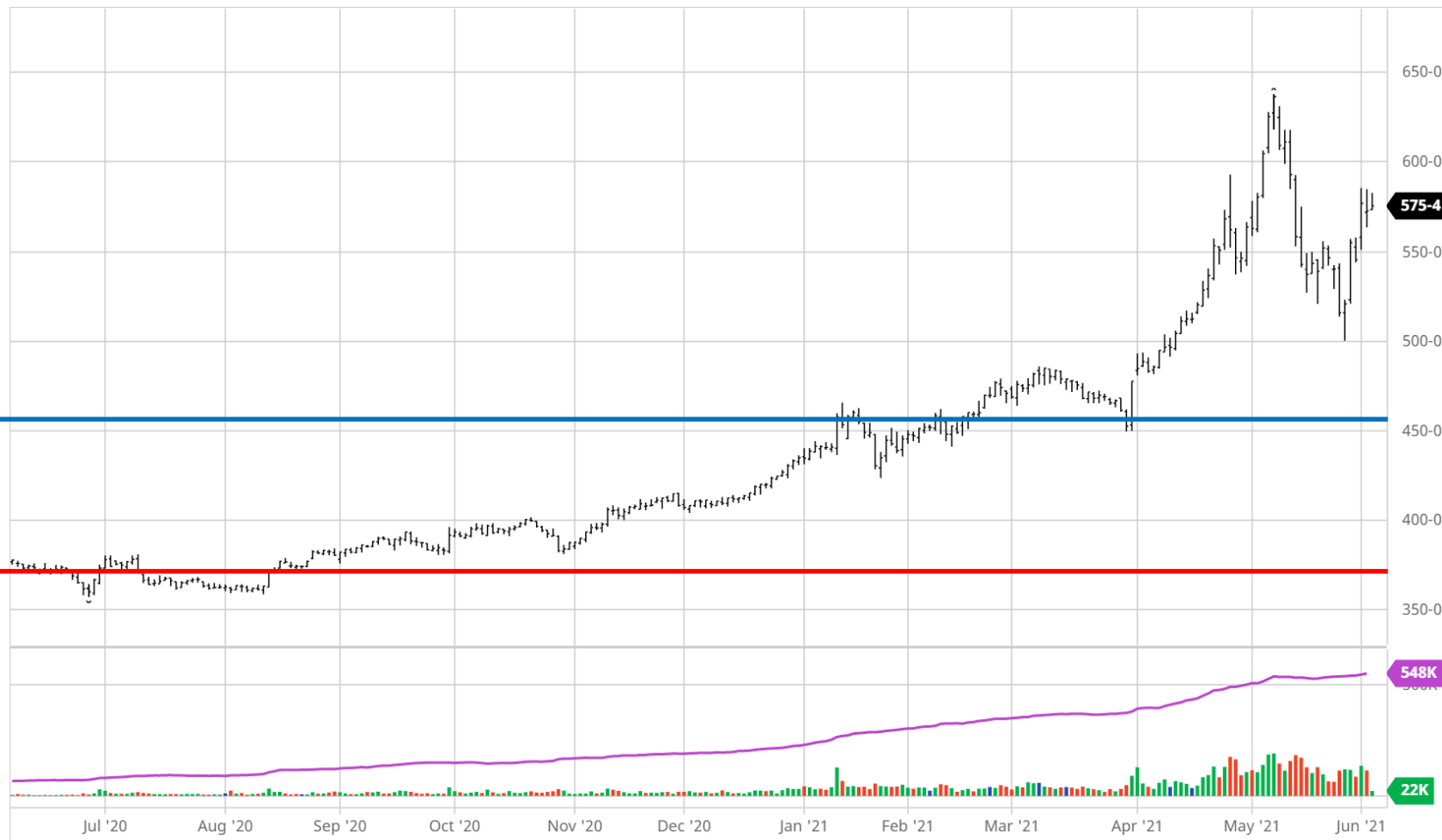
Reflects **June 1, 2021**  
U.S. Drought Monitor data



Approximately **24%** of corn  
production is within an area  
experiencing drought.

*Major and minor agricultural areas are  
delineated using NASS 2017 Census of  
Agriculture data. Drought areas are  
identified using the U.S. Drought Monitor  
product.*

# PRICE CHART – CORN: 6-3-2021



## Corn Dec '21 (ZCZ21)

575-0 +2-2 (+0.39%) 08:39 CT [CBOT]

575-0 x 17

575-2 x 30

QUOTE OVERVIEW for Thu, Jun 3rd, 2021

Day Low	573-4	Day High	582-6
Open	573-4		
Previous Close	572-6		
Volume	30,706		
Open Interest	547,634		
Stochastic %K	78.06%		
National Corn Index	6.8677		
Weighted Alpha	+60.92		
5-Day Change	+56-6 (+10.90%)		
52-Week Range	357-0 - 638-0		

Policy Price Levels

CI \$4.58

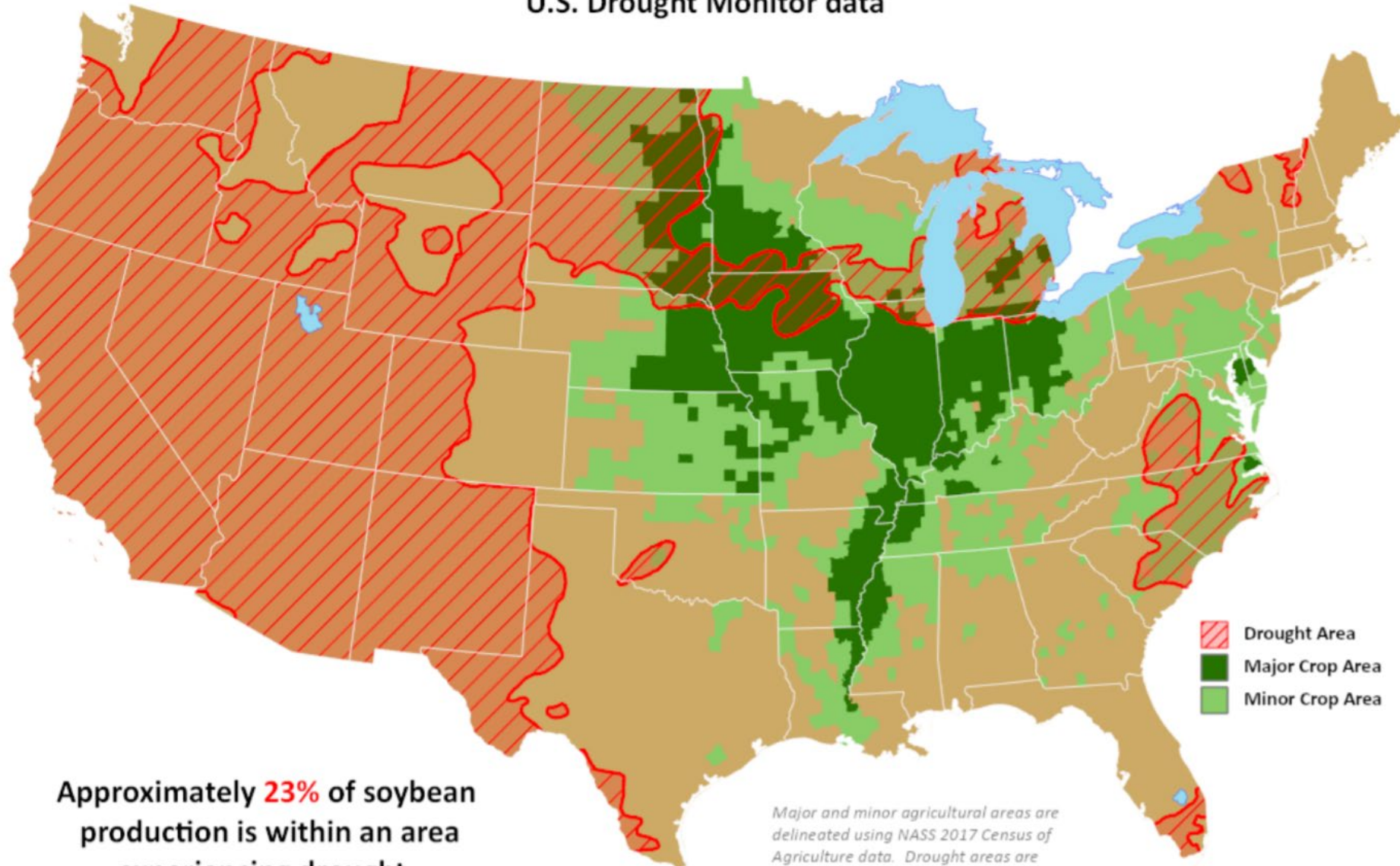
PLC \$3.70

Life of Contract Futures Prices for the year as of Thursday; CBOT, December 2021 Corn, High/Low/Close. Compared to Policy Benchmarks, the USDA, Price Loss Coverage Reference Price and the Crop Insurance Price Guarantee.

Source: Barchart.com

# Soybean Areas in Drought

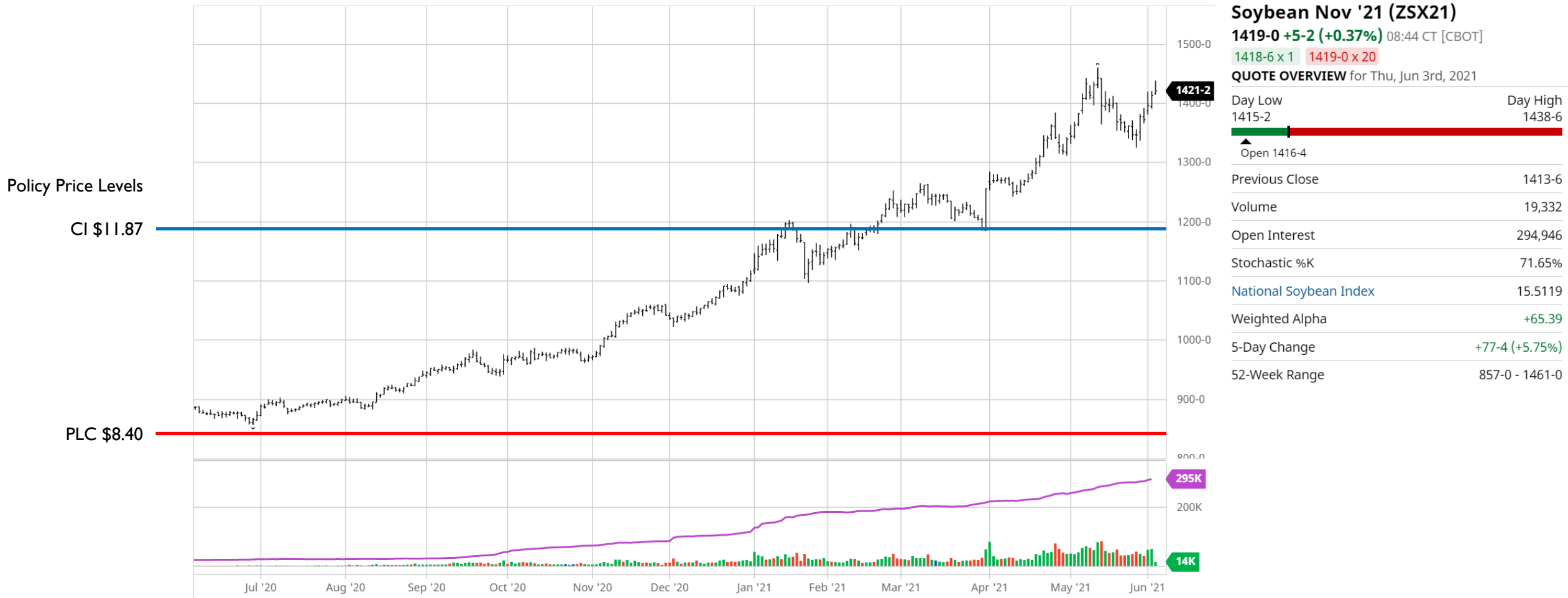
Reflects **June 1, 2021**  
U.S. Drought Monitor data



Approximately **23%** of soybean  
production is within an area  
experiencing drought.

*Major and minor agricultural areas are  
delineated using NASS 2017 Census of  
Agriculture data. Drought areas are  
identified using the U.S. Drought Monitor  
product.*

# PRICE CHART – SOYBEANS: 6-3-2021



Life of Contract Futures Prices for the year as of Thursday; CBOT, November 2021, Soybeans, High/Low/Close. Compared to Policy Benchmarks, the USDA, Price Loss Coverage Reference Price and the Crop Insurance Price Guarantee.

Source: Barchart.com