

In addition to NCIS What's Happening, we are providing:

1. a weekly update of USDA's drought monitor for both corn and soybeans and
2. daily futures price movements for both corn and soybeans including crop revenue guarantee prices along with the PLC price.

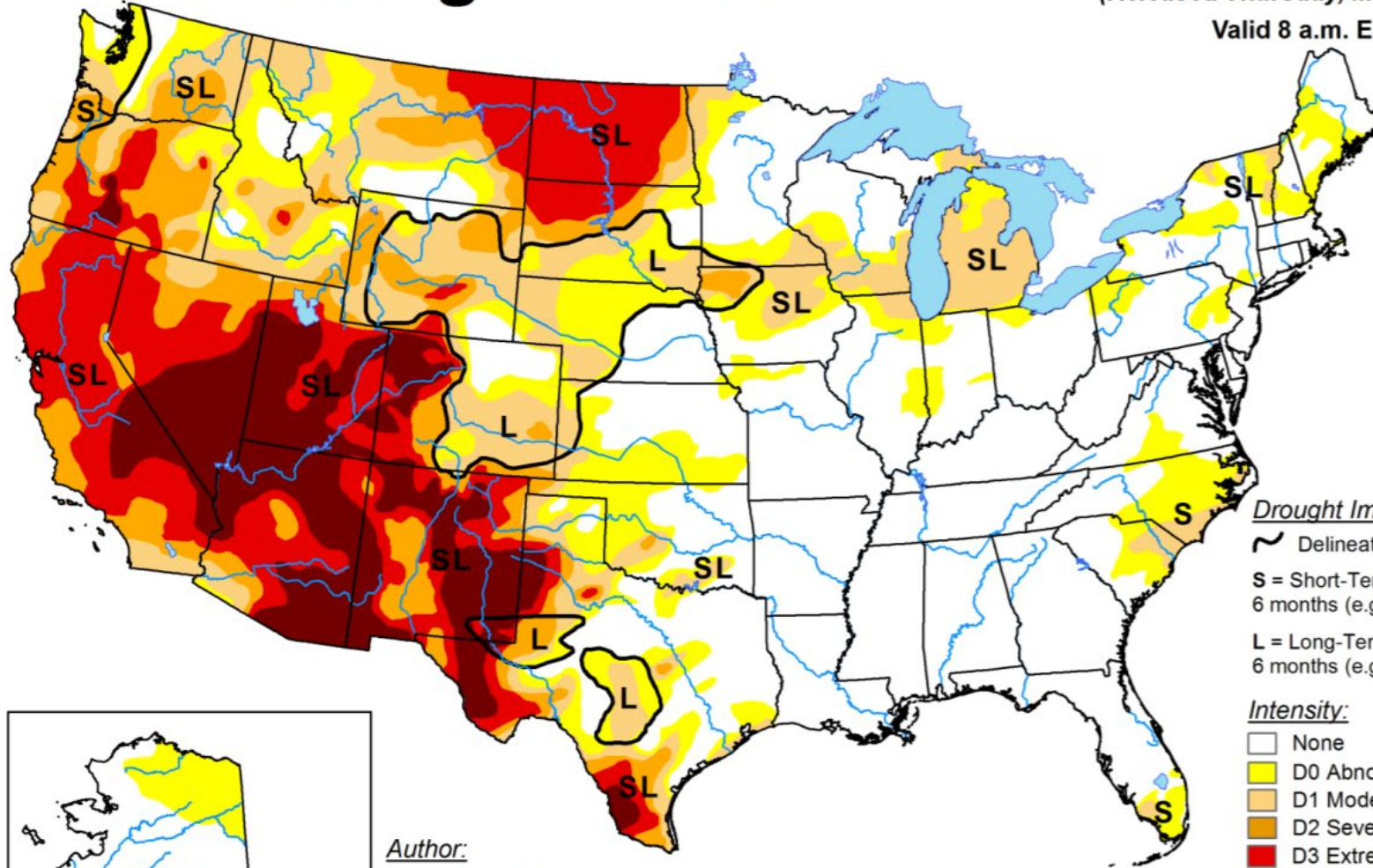
We hope you will find this a useful supplement to our weekly NCIS update.

U.S. Drought Monitor

May 11, 2021

(Released Thursday, May. 13, 2021)

Valid 8 a.m. EDT



Drought Impact Types:

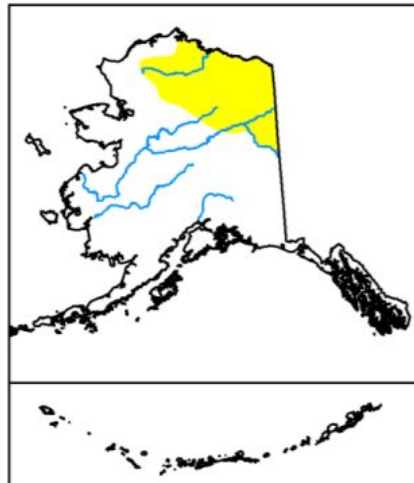
~ Delineates dominant impacts

S = Short-Term, typically less than 6 months (e.g. agriculture, grasslands)

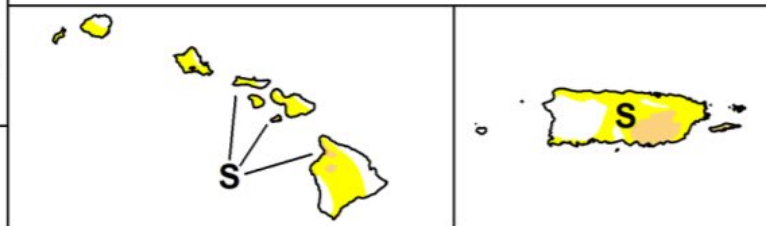
L = Long-Term, typically greater than 6 months (e.g. hydrology, ecology)

Intensity:

- None
- D0 Abnormally Dry
- D1 Moderate Drought
- D2 Severe Drought
- D3 Extreme Drought
- D4 Exceptional Drought



Author:
David Simeral
Western Regional Climate Center



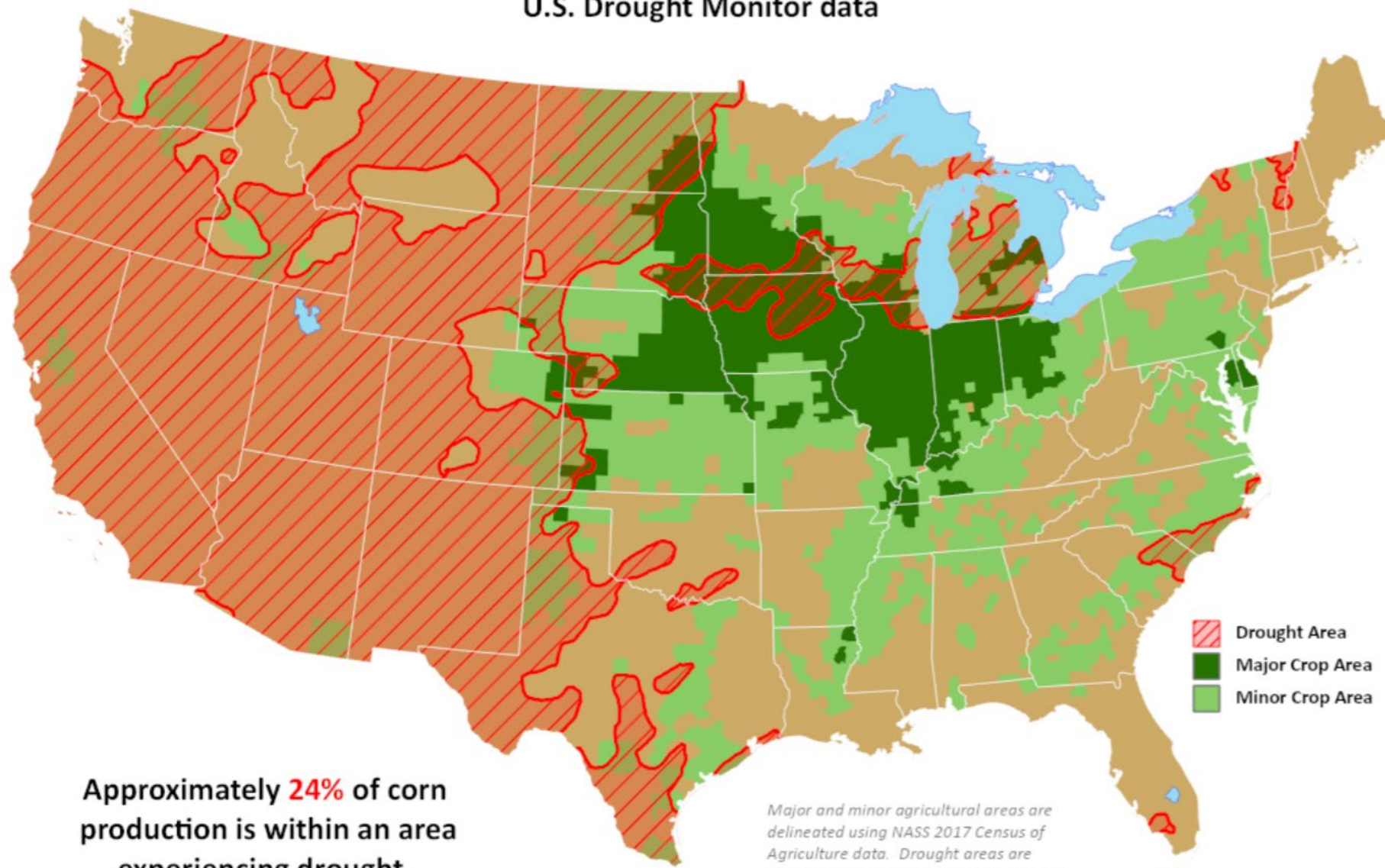
The Drought Monitor focuses on broad-scale conditions. Local conditions may vary. For more information on the Drought Monitor, go to <https://droughtmonitor.unl.edu/About.aspx>



droughtmonitor.unl.edu

Corn Areas in Drought

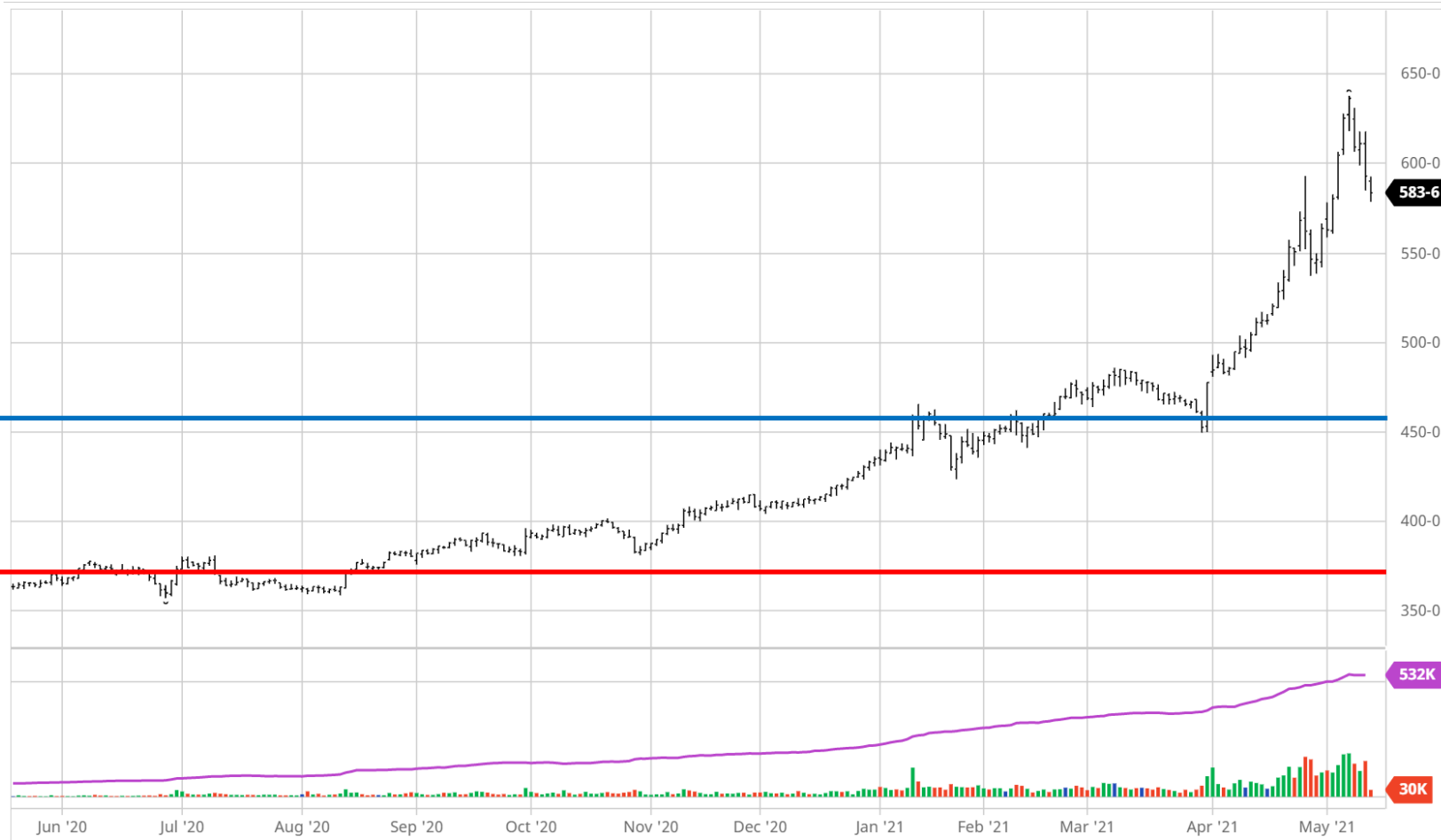
Reflects **May 11, 2021**
U.S. Drought Monitor data



Approximately **24%** of corn
production is within an area
experiencing drought.

Major and minor agricultural areas are delineated using NASS 2017 Census of Agriculture data. Drought areas are identified using the U.S. Drought Monitor product.

PRICE CHART – CORN: 5-13-2021



Corn Dec '21 (ZCZ21)

583-6 -9-2 (-1.56%) 07:44 CT [CBOT]

581-4 x 103

581-4 x 57

QUOTE OVERVIEW for Thu, May 13th, 2021

Day Low	578-6	Day High	592-6
583-6		Open 590-2	

Previous Close	593-0
----------------	-------

Volume	32,755
--------	--------

Open Interest	531,665
---------------	---------

Stochastic %K	58.59%
---------------	--------

National Corn Index	7.2936
---------------------	--------

Weighted Alpha	+70.67
----------------	--------

5-Day Change	-41-6 (-6.67%)
--------------	----------------

52-Week Range	357-0 - 638-0
---------------	---------------

Policy Price Levels

CI \$4.58

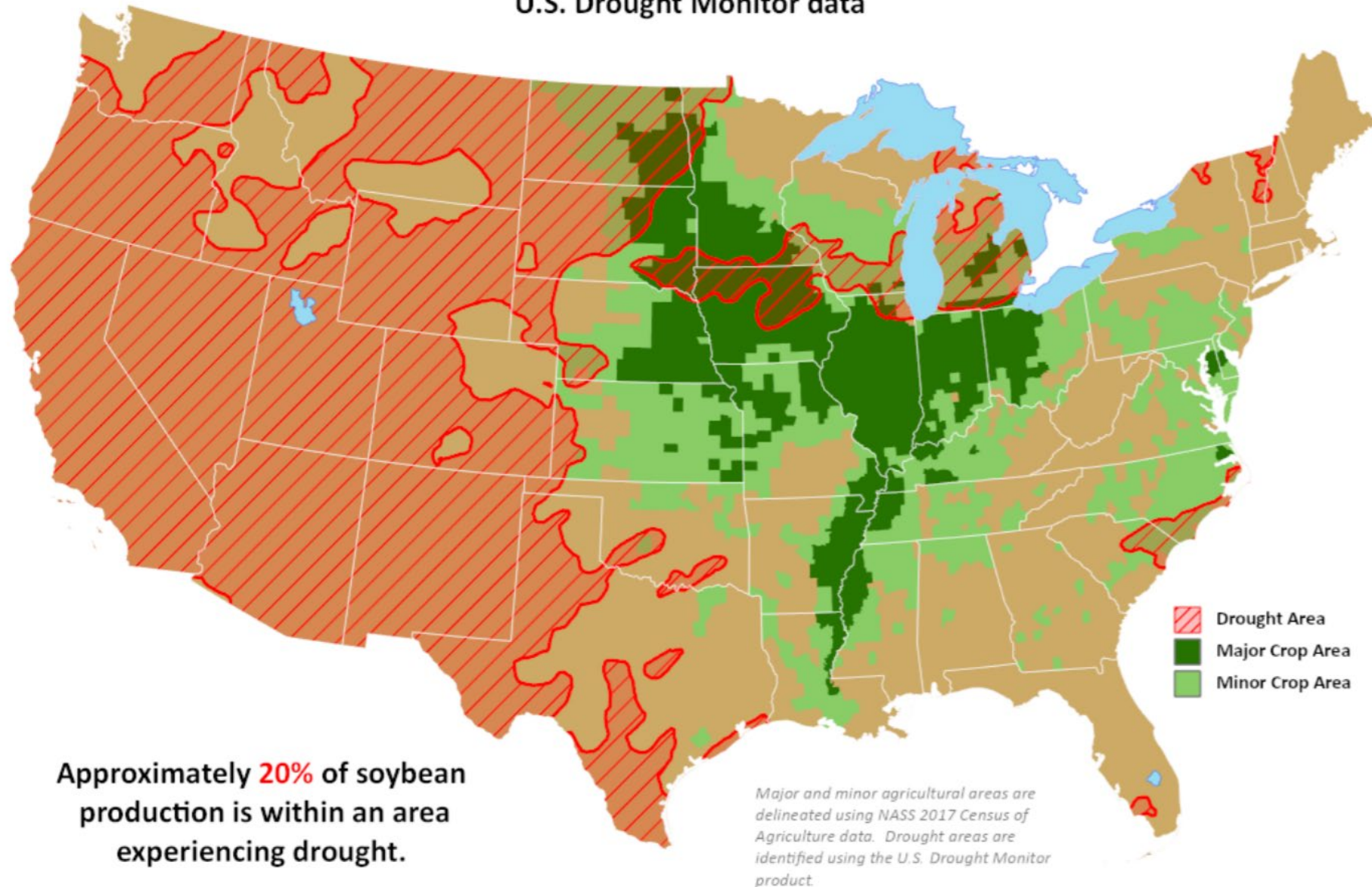
PLC \$3.70

Life of Contract Futures Prices for the year as of Thursday; CBOT, December 2021 Corn, High/Low/Close. Compared to Policy Benchmarks, the USDA, Price Loss Coverage Reference Price and the Crop Insurance Price Guarantee.

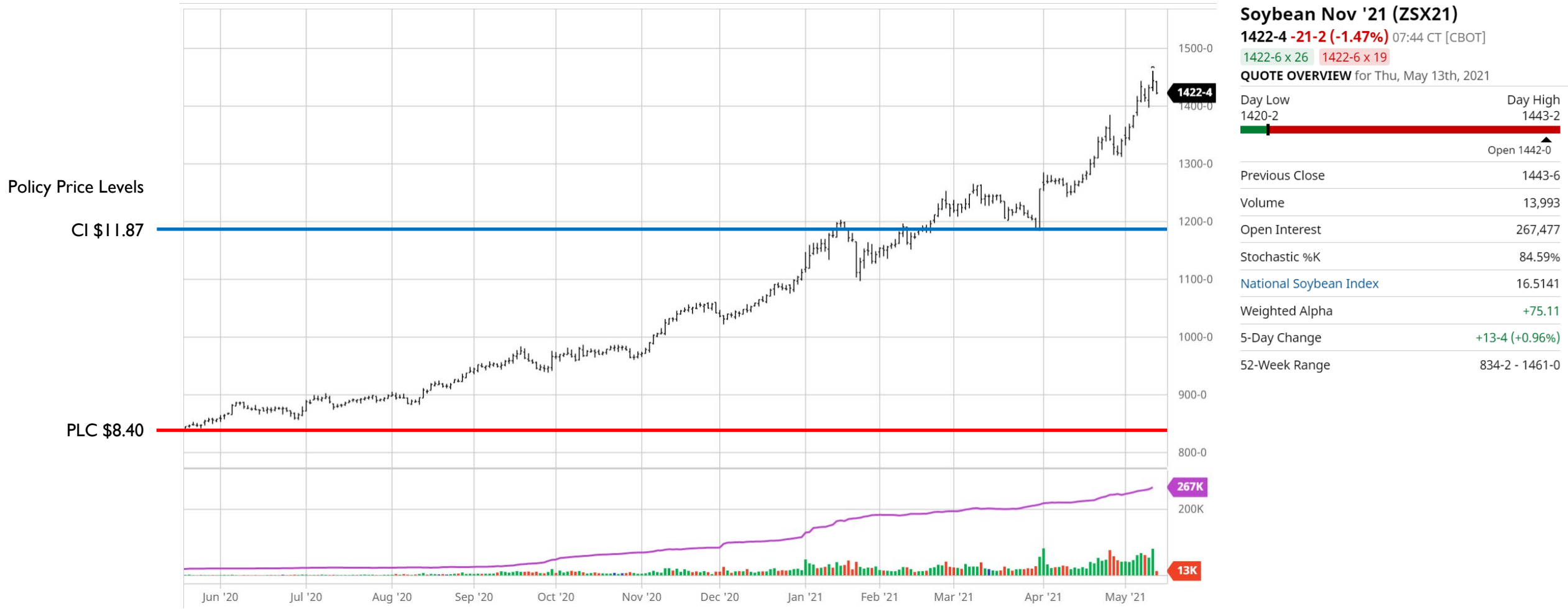
Source: Barchart.com

Soybean Areas in Drought

Reflects **May 11, 2021**
U.S. Drought Monitor data



PRICE CHART – SOYBEANS: 5-13-2021



Life of Contract Futures Prices for the year as of Thursday; CBOT, November 2021, Soybeans, High/Low/Close. Compared to Policy Benchmarks, the USDA, Price Loss Coverage Reference Price and the Crop Insurance Price Guarantee.

Source: Barchart.com